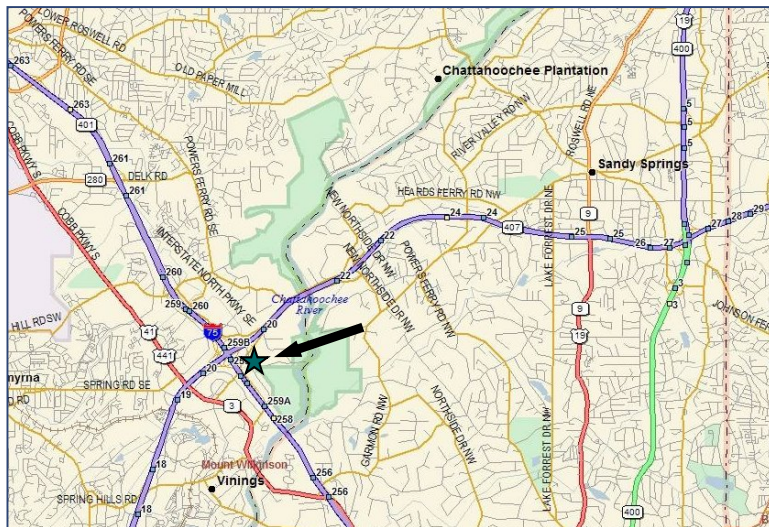


ONE TOWER CREEK



**3101 TOWERCREEK PARKWAY
ATLANTA, GEORGIA 30339**

- High quality, seven-story Office Building, Totaling 98,000 Square Feet
- Suites available from 1,132 SF to 4,886 SF
- Superior visibility and signage identity
- Café in Lobby
- On-Site Security Guard
- Parking ratio offered at 3.5:1000 SF with both covered areas and surface spaces
- Excellent location and convenient access to I-75 N/S and I-285 E/W
- Close proximity to area amenities including Cumberland Mall, a variety of restaurants, banks and hotels, as well as quality housing in varying price ranges



For more information contact:

Amir Levin

or

Ron Levin

770.458.2870

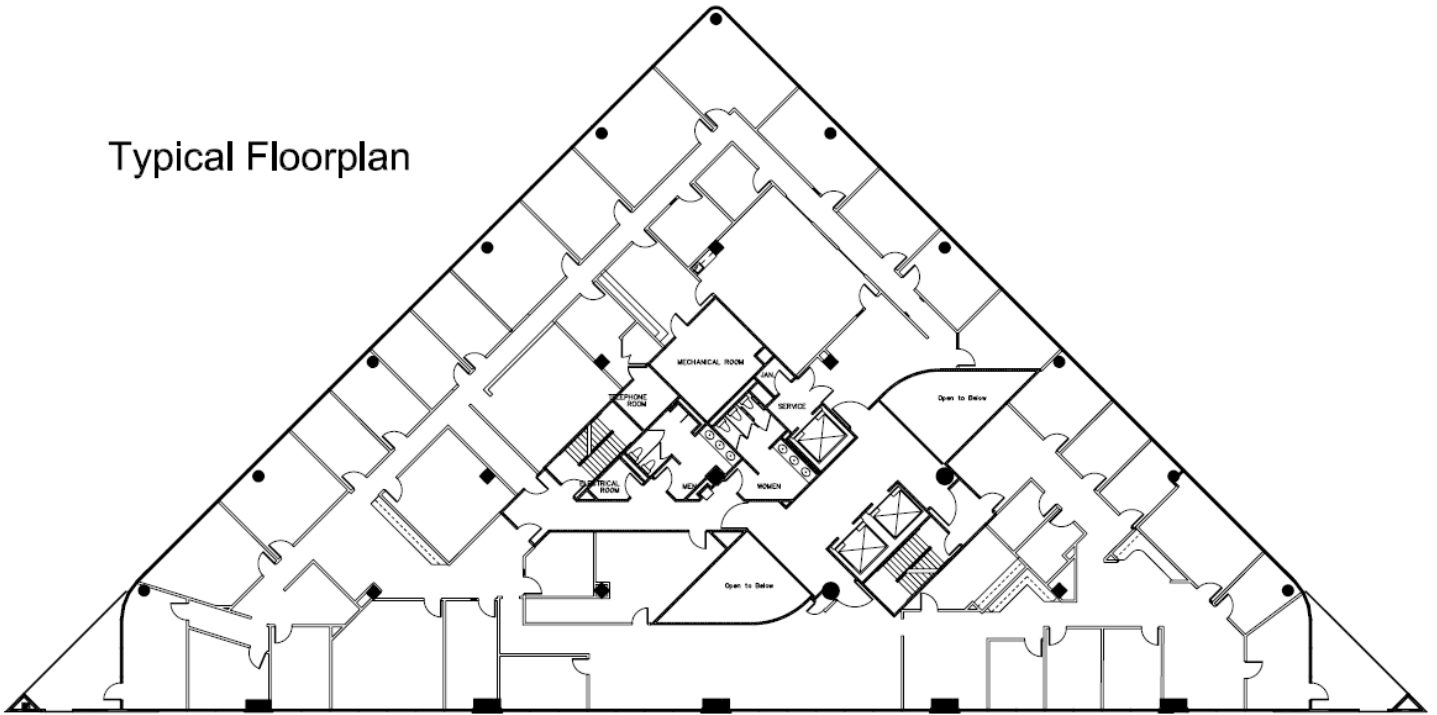
www.altaproperties.com



ONE TOWER CREEK

3101 TOWERCREEK PARKWAY
ATLANTA, GEORGIA 30339

Typical Floorplan



ONE TOWER CREEK

For more information contact:

Amir Levin

or

Ron Levin

770.458.2870

www.altaproperties.com



Information contained herein has been provided to broker by owner or from other sources. We have no reason to doubt its accuracy, but we do not guarantee it. Broker disclaims all expressed or implied responsibilities for omissions, errors, environmental conditions of soil/structure, operating systems, the roof, price and compliance with applicable laws. Suitability for intended use or any other matter is the responsibility of purchaser or tenant. Prospective purchasers or tenants agree to independently obtain and analyze all material information.